



## Mission Documents



### Step One Print It

Print this document, each page one a single piece of paper. You'll need the individual pages.

The following pages contain the "Training Mission" as well as Mission 1: "Central Station"

### Step Two Work Together

Escape Team is the most fun when played with 2-4 players.

Every mission has different phases. The solution code of each phase must be entered in the ESCAPE TEAM app, in order, beginning with Phase 1.

However, we recommend to spread all of the mission's pages on the table, working on them together in parallel.

### Step Three Be Prepared

Every mission's overview has a list of required material (scissors, pens, ...). Make sure that everything is available. We recommend using colourful, easily distinguishable pens. Also, pencils and erasers could be useful...

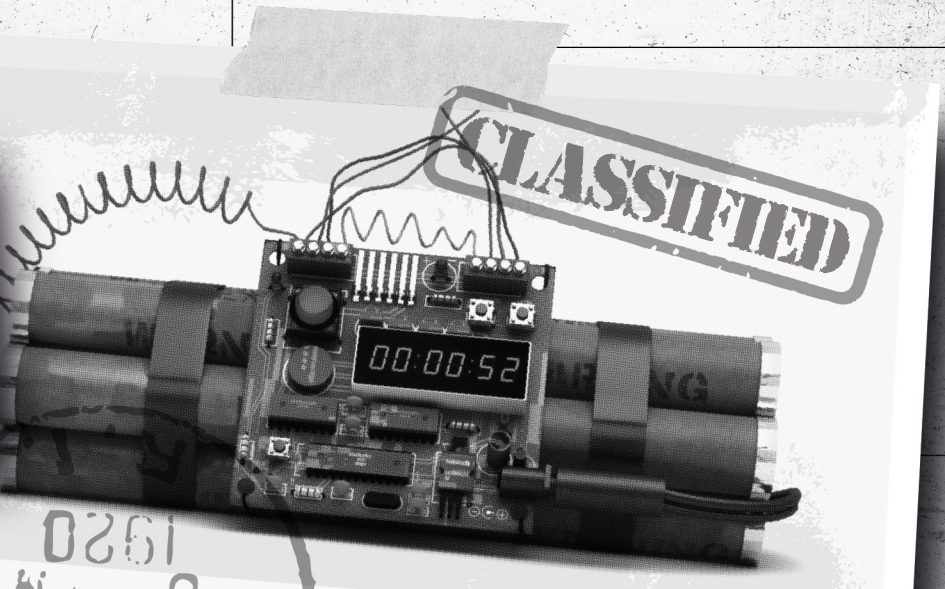
### Step Four Get Ready

Start the ESCAPE TEAM app. The game's story is told through audio messages and sounds will notify you of new clues, so activate sound\* on your device. In the app, choose your mission to let your adventure begin.

\*Should you be using an iPhone, make sure to also bring the 'mute switch' on the device's side, right above the volume buttons, into the 'sound activated' position

832982-3248072390-234  
ESCAPE TEAM-2348623-2

0261





# Training Mission

01

05

**CONFIRMED**

- Easy/ [REDACTED]
- Max 10 Mins
- 2-4 Players
- Scissors, Pens, Paper

This is a really easy mission, introducing you to the basics of ESCAPE TEAM. If you do not make it in time, never think about disarming a real bomb...

[REDACTED]

[REDACTED]

832982-3248072390  
ESCAPE TEAM-23486



FOOLS!

This bomb is disarmed in THREE PHASES. I bet you're not going to finish even the first one. If you really want to try, go ahead. Every single one of my puzzles leads to a FIVE DIGIT CODE for its phase. If you think that you solved a phase, enter its code into the app and confirm it by pressing, OK.\*

\*If you enter a code wrong, there will be a time penalty, of course! Tick-tock!

X = ... - - - - -



# Training Mission

02

05

On receiving the  
message of the  
British Army  
Head, from the  
British Army  
by means of an  
airplane of  
the Royal Air  
Force, a plane  
which was  
sent from the  
British Army  
of the Middle  
East, postage  
paid, by  
the British  
Army, to the  
British Army.

*[Handwritten notes in cursive script]*

483 7300  
CARTON UNIT  
[Table with columns for tracking information]

12 121

Til by

Phase  
One



L'Album de Lingerie et de Travaux pour Dames (3<sup>e</sup> édition)  
est indispensable dans chaque famille (voir annonce ci-jointe)

11141  
Petit chapeau très élégant en satin  
gris foncé. Haut bord recouvert de  
dentelle de couleur.  
Le fond du chapeau  
est garni de  
dentelle rose.  
Boutons de  
satin blanc.  
Sur le bord  
intérieur, en  
satin blanc, le  
motif de la  
dentelle.

CONSULTATIONS DU DOCTEUR  
[Text of medical consultation]



05.1.43-78

# Training Mission

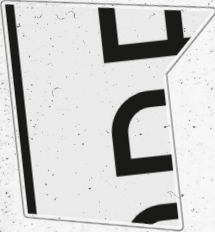
03

05

Phase  
Two

Y = . . . . .

N . . .  
O . . . .  
P . . . .  
Q . . . .  
R . . . .  
S . . . .  
T . . . .  
U . . . .  
V . . . .  
W . . . .  
X . . . .  
Y . . . .  
Z . . . .



Supprime l'emploi du savon - Economie de temps  
Agents GERNIX  
GEORGES REGNAULT & Cie  
38 rue de Valenciennes, Paris (IX<sup>e</sup>)  
Maigrir en 2 mois  
LES DAMES EN 2 MOIS  
CHEVEUX GRIS OU BLANCS  
PUCES  
JUTOU!  
MIEL  
Cils SOURCILS  
EPILEPTIQUES  
Tissane de Chartroux  
Est le Roi  
des Duperesses du Sexe  
LA ROSMARE  
POUDRE de HA LIQUIDE  
MAIGRIR en 2 MOIS  
LES DAMES EN 2 MOIS  
CHEVEUX GRIS OU BLANCS  
PUCES  
JUTOU!  
MIEL  
Cils SOURCILS  
EPILEPTIQUES  
Tissane de Chartroux  
Est le Roi  
des Duperesses du Sexe  
LA ROSMARE  
POUDRE de HA LIQUIDE

A ..  
 B ....  
 C .....  
 D ...  
 E .  
 F .....  
 G ---  
 H .....  
 I ..  
 J .....  
 K ...  
 L .....  
 M ---



Handwritten mathematical notes and diagrams on a piece of paper:

- Equation:  $N_j, v_j | C_j | N_j, v_j, N_j, v_j$
- Equation:  $y^2 - (v_i + v_j)(N_i + N_j)$
- Equation:  $(x-1)^k - \frac{1}{(x-1)^k} - 4(x-1) - \frac{1}{(x-1)^k} + \frac{1}{(x-1)^k}$
- Equation:  $\int \int \delta_c(\phi(x,y)) |\nabla(\phi(x,y))| dx dy$
- Diagram: A network graph with nodes labeled P, Q, P&Q, P|FF&Q, P|FF~Q, and FALSE, connected by arrows.
- Diagram: A graph with a summation symbol  $\sum$  and the word "bonds".
- Graph: A coordinate system with a curve  $y=f(x)$ , a vertical line, and a horizontal dashed line labeled "d".
- Text: "In  $(\Delta)$  is the intersection of  $f^{-1}(c_0)$ "
- Equation:  $\Delta(c_1) = \emptyset$
- Text: " $y_1, y_2 \in C\{c_0\}$  satisfy  $\Delta(y_1)$  and only if there are elements a..."
- Equation:  $y_1 = f(c_1), y_2 \in P(\emptyset)$
- Text: " $B\{c_0\}$  is the pullback of A..."



Phase  
 Three



# Bonus Mission

05

05

We're @playescapeteam on Instagram and we'd love to see postings of you showing how you're having fun with Escape Team. Also, simply email us a link to your posting to mission@escape-team.com and we'll return the favor by sending you six voucher codes for Mission 5: Subway one for you, five for your friends! (Watch out: the voucher codes will only (!) work with Android devices, not on iPhones and iPads. So, if you're an iPhone user: time to invite some friends over, together with their Android phones!)



ESCAPE  
TEAM

001-006



832982-3248072390-23486  
ESCAPE TEAM-2348623-234



ESCAPE  
TEAM

002-006

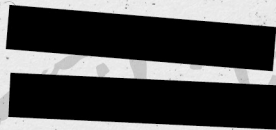


832982-3248072390-23486  
ESCAPE TEAM-2348623-234



ESCAPE  
TEAM

003-006



832982-3248072390-23486  
ESCAPE TEAM-2348623-234



ESCAPE  
TEAM

004-006

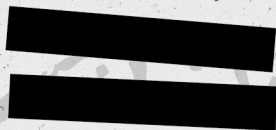


832982-3248072390-23486  
ESCAPE TEAM-2348623-234



ESCAPE  
TEAM

005-006



832982-3248072390-23486  
ESCAPE TEAM-2348623-234



ESCAPE  
TEAM

006-006



832982-3248072390-23486  
ESCAPE TEAM-2348623-234



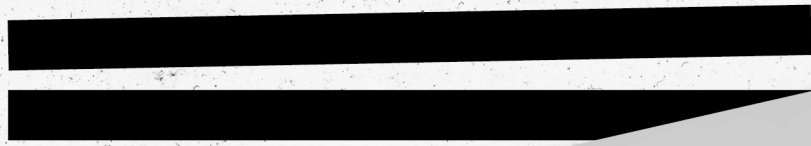
# Mission 01 Central Station

01  
06



- Easy/ [redacted]
- Max 15 Mins
- 2-4 Players
- Scissors, Pens, Paper

This mission tests your team-play abilities. Work cooperatively, let others know what you're thinking, stay calm and you won't have any problems with this bomb.

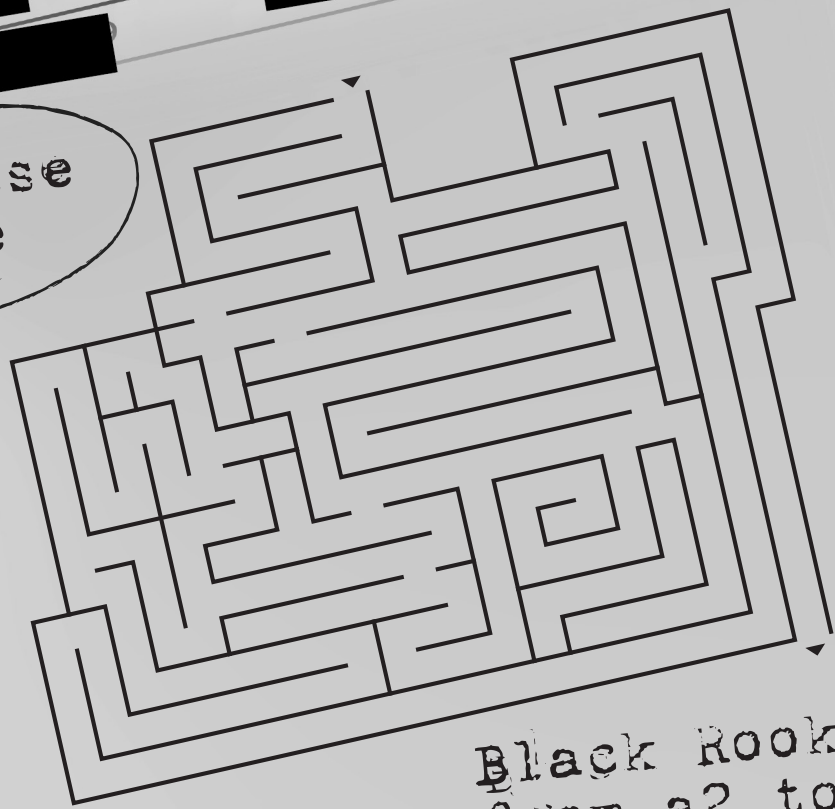


82-3248072390  
E. TEAM-23486

# The Old Newspaper

SECTION 4

Phase One



Black Rook from a2 to a1.

LOKOMOBILE

Mission 01: Central Station

02

06

Phase  
Two



White Bishop  
from e4 to d3.



Phase Three

Our code consists of the digits 0, 3, 4, 5 and 8. But in which order? The 4 is on the 5's right, but not necessarily directly next to it. 0 and 5 keep a maximum distance. The 3 is between the two numbers that usually follow it. The two digits on the right add up to the same number as the two digits on the left. White Queen from b3 to b5. Black Bishop from f7 to g6.

Do not forget:  
Gamma falls  
onto Kappa and  
Epsilon falls  
onto Beta.

Always consider  
the flipside.

Phase Four

Black Rook from e2 to e1  
 White Bishop from h3 to g4  
 Black Bishop from h7 to f5  
 White Queen from a4 to e4  
 Black Rook from e1 to b1  
 White Bishop from g4 to f3  
 Black Bishop from f5 to e6  
 White Rook from h1 to e1  
 Black ...

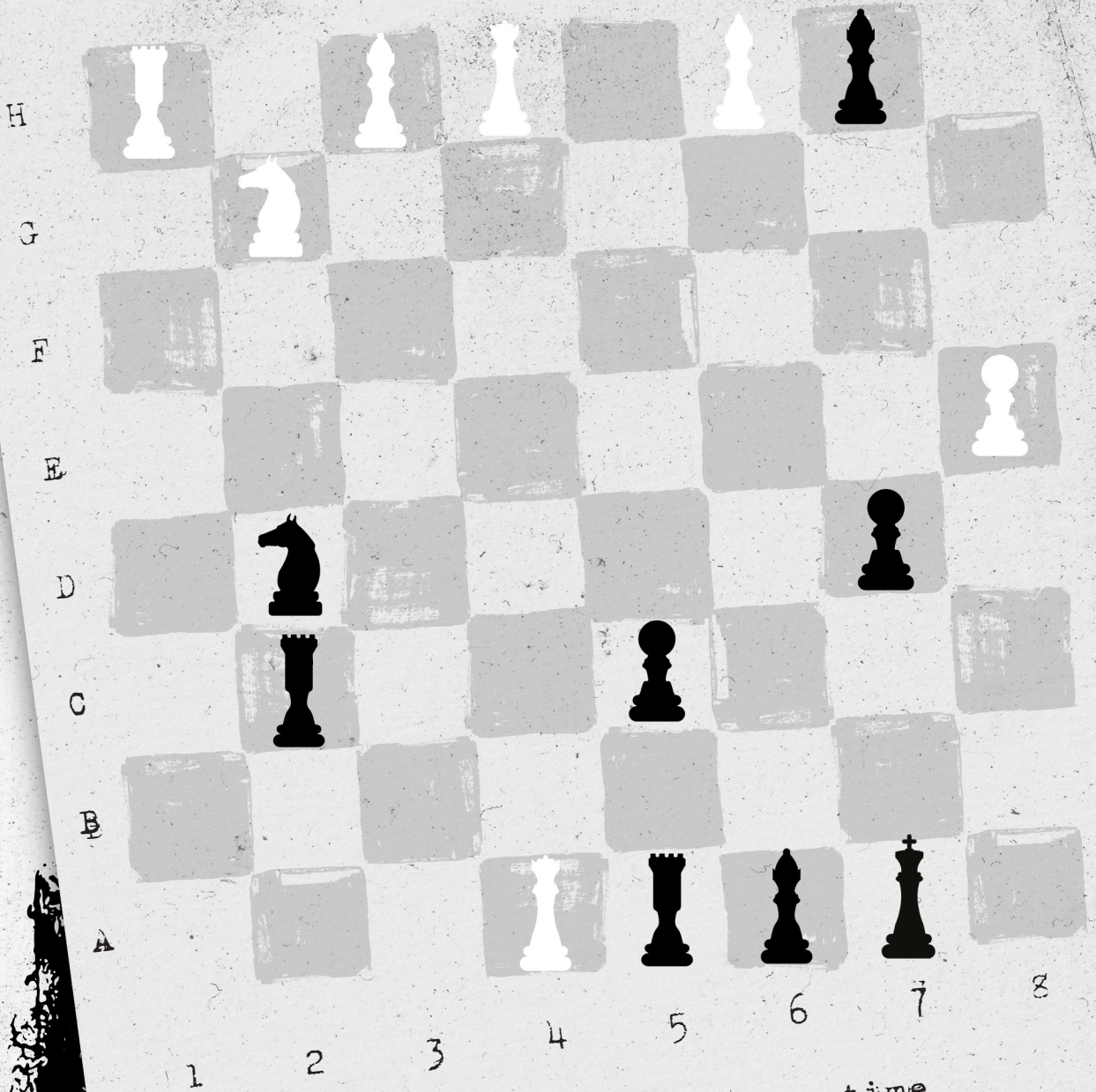
Starting in the north, how  
 following the clock: How  
 many stars are in the arms  
 of the supernova star?

LES DAMES EN 2 MOIS  
 MAIGRIR  
 LES GRISES OU BLANCS  
 CHEVEUX  
 MIEL  
 KOSBY  
 Est le Roi  
 LA  
 TISSAGE de Chartreux  
 des Drapeaux du Sang  
 LA  
 MESSAMES  
 LES DAMES EN 2 MOIS  
 MAIGRIR  
 LES GRISES OU BLANCS  
 CHEVEUX  
 MIEL  
 KOSBY  
 Est le Roi  
 LA  
 TISSAGE de Chartreux  
 des Drapeaux du Sang  
 LA  
 MESSAMES

# Mission 01: Central Station

05

06



Temporarily fold the space-time continuum in the following ways:  
Eta falls onto Iota. Alpha falls onto Zeta. Lambda falls onto Delta.

# Mission 01: Central Station

06

06



... Rook from b1 to b2  
White Queen from e4 to b3  
Black Bishop from e6 to f7  
White Bishop from f3 to e4  
Black Rook from b2 to a2  
...